
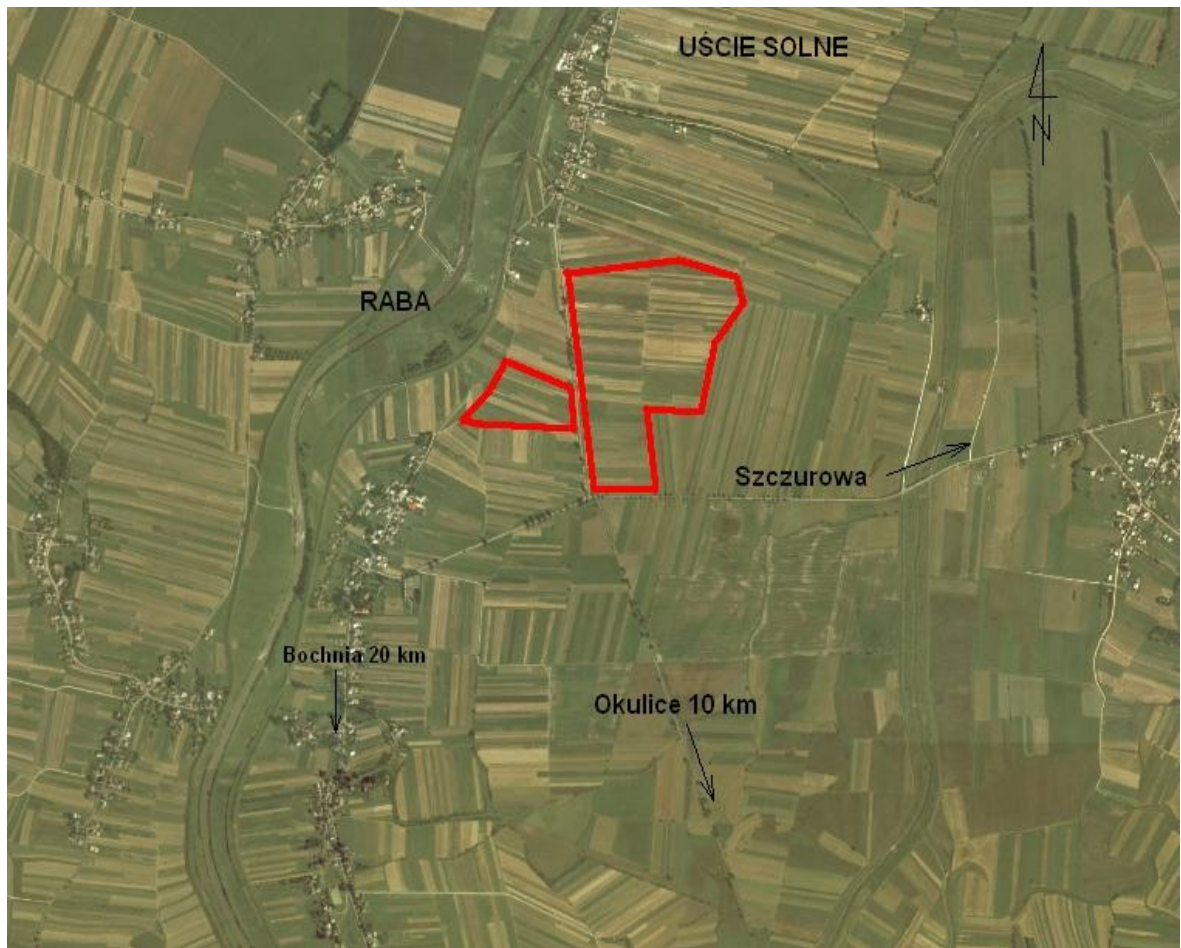
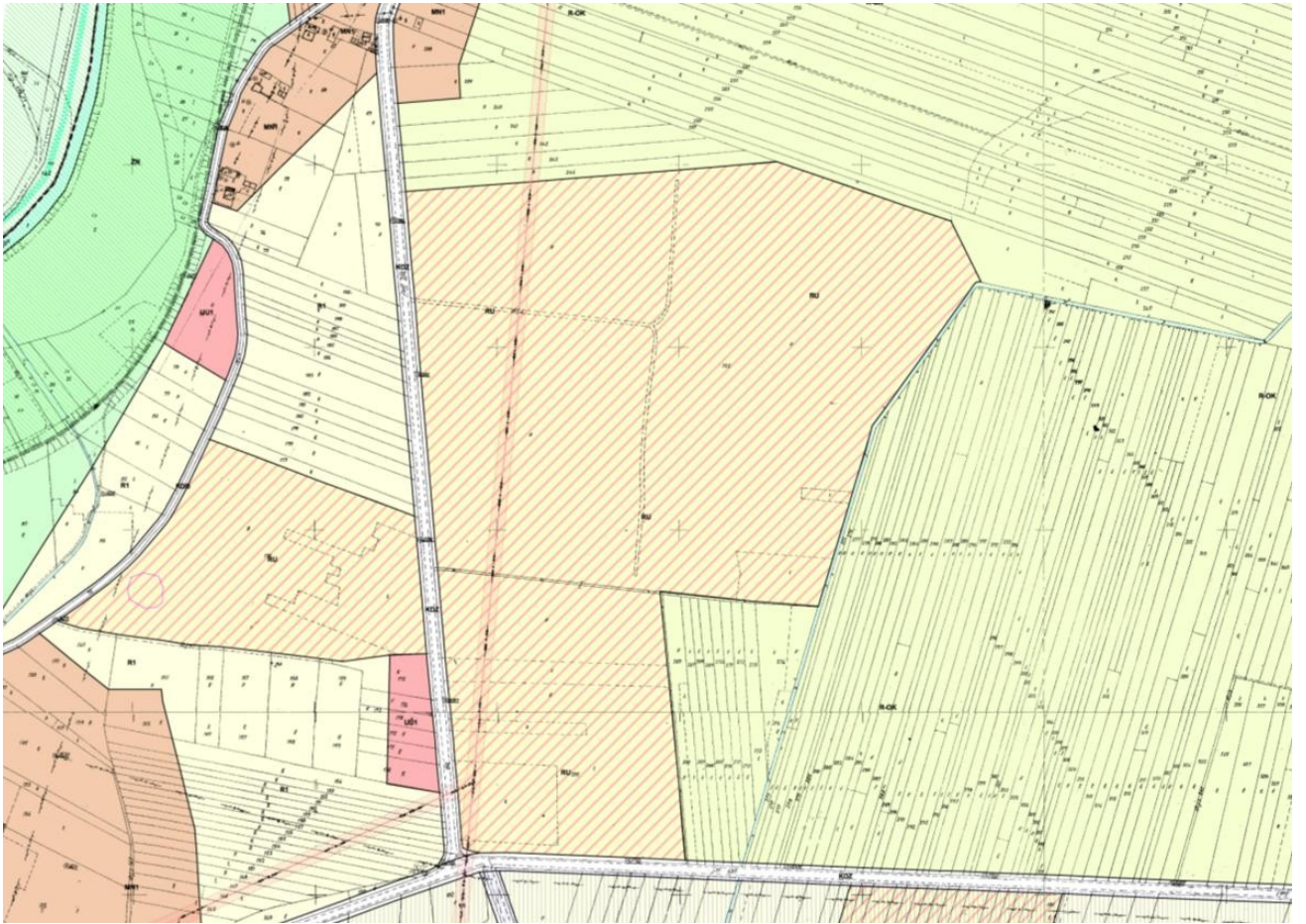


<p>Map</p> <p>Annex</p>	<p>Photo</p> <p>Annex</p>	<p>Bochnia Commune</p> 
Name of the offer	Investment field in Cerekiew	
Subject of the offer	Estate unbuilt over	
Transaction typ	Unlimited oral bid	
Location	Cerekiew, Bochnia Commune , Administrative district of Bochnia	
Real property area	Dz. 265 - 37,58 ha Dz. 176 - 6,16 ha	
Owner/owners	Bochnia Commune	
Intended use In the current development plan or the study on the conditions and directions of the area development	Fields of rural – nutritive economics Objects and fix-ups for rural productions, objects for service activity of agriculture rural processing.	
Building Limitations	Building coverage - No limits Building height limit - 14m	
Parcel characteristic	Soil class with area - Dz. 265 -Dr-0,28 ha, W-0,34 ha, ŁIII-0,59 ha, RIVa-1,73 ha,RIIIa-2,57 ha, ŁII-5,98 ha, RIIIb-19,93 ha Dz. 176 -RIIIb-0,44 ha, ŁIII-1,40 ha, RIIIa-2,14 ha, RII-2,18 ha The ground is excluded from agricultural production Flat field Agricultural usage	
Traffic infrastructure	Communal road, width 10m Motorway 12 km National road 15 km Railway line - Bochnia 13 km Railway siding [km] - Bochnia 13 km Nearest international airport [km] -Kraków Balice 40 km	
Technical infrastructure	Electricity – Voltage 15 kV - Available capacity 1 MW Gas - Connection point (distance from boundary) 100m, Available capacity, Depending on need of investor Water supply- Available capacity 150 m ³ /24h Sewage discharge - Documentation is being prepared Treatment plant - Documentation is being prepared Telephone	
Other		
Contact	Maria Porębska, (014) 611– 60–20, 0 600 702 284, ugbochnia@poczta.fm	



Annex



Annex